

**JACK**

World No.1

Shanghai stock  
listed

# JK-8670G-UT

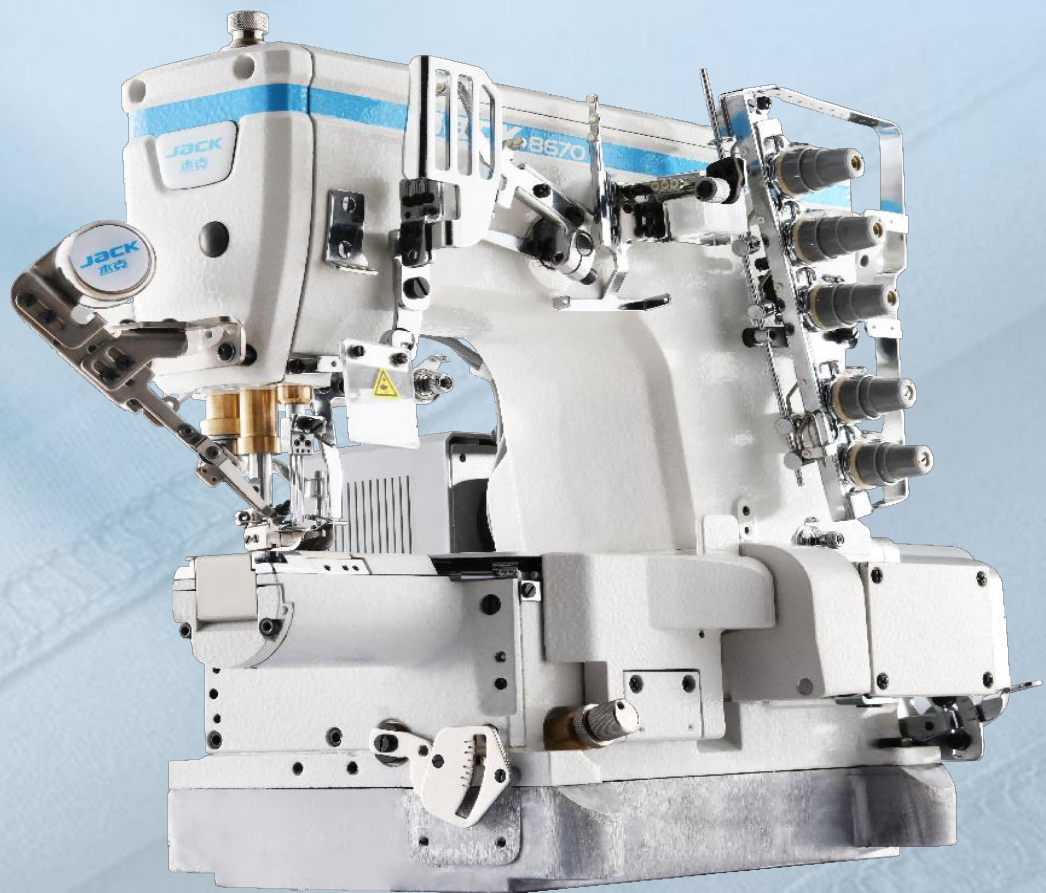
## High speed small cylinder bed interlock

Step motor trimming and Presser foot lift efficient

Smooth operation

Cam anti-wrap, far away from tangled lines

Beautiful stitches of cross-bone part



# JK- 8670G –UT

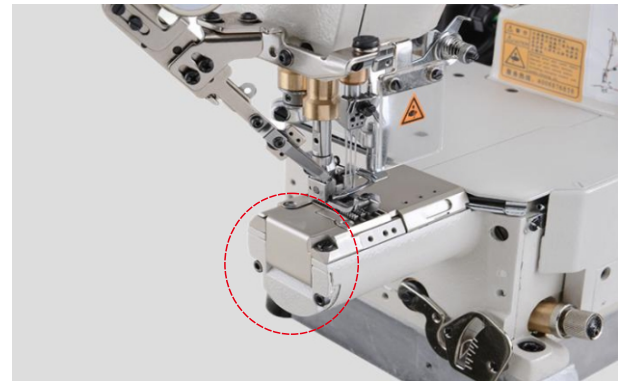
Product name:high speed small cylinder bed interlock  
Characteristic:high efficiency,fast operation, good performance



1. Step motor trimming and Presser foot lift、 efficient  
Stepper motor driving foot lifter and trimming

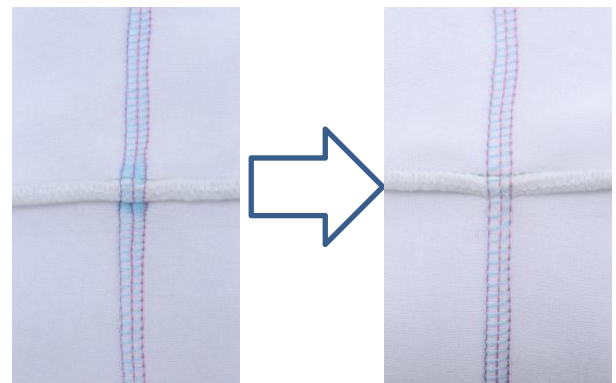


3. Cam anti-wrap, far away from tangled lines  
Cam anti-wrap:prevent the bottom thread wrap on the thread cam after breaking, improving production efficiency;Quick positioning: thread cam is easy to install, also quick, convenient and accurate.



2. Smooth operation

Cylinder circumference is 180mm,suitable for cylindrical fabric, more smooth, convenient operation, higher efficiency



4. Beautiful stitches of cross-bone part  
Optimized presser foot climbing structure, beautiful and even stitches

## Technical Parameters

Model	Needle number	Needle number	Thread number	Stitch length	differential ratio	Feet height	Needle bar movement	Max speed	Stepper motor driving foot lifter and trimming	Pneumatic auto trimmer and foot lifter	Closed seam device	Volume	Weight
JK-8670GD I -01CB ×356	#11	5	3	1.5-4.5	1:0.8-1:1.3	7.0	33.4	4000	X	X	X	65x42.8x60	40/50
JK-8670G-01CB ×356/UT	#11	5	3	1.5-4.5	1:0.8-1:1.3	7.0	33.4	4000	√	X	X	65x42.8x60	48/58
JK-8670G-01CB ×356/UTL	#11	5	3	1.5-4.5	1:0.8-1:1.3	7.0	33.4	4000	X	√	X	65x42.8x60	45/55
JK-8670G-01CB ×364/UT	#11	5	3	1.5-4.5	1:0.8-1:1.3	7.0	33.4	4000	√	X	X	65x42.8x60	48/58
JK-8670G-01CB ×364/UTL	#11	5	3	1.5-4.5	1:0.8-1:1.3	7.0	33.4	4000	X	√	X	65x42.8x60	45/55
JK-8670G-03FB ×356/UTL	#11	5	3	1.5-4.5	1:0.8-1:1.3	7.0	33.4	4000	X	√	X	65x42.8x60	45/55
JK-8670G-03GB ×356/UTL	#11	5	3	1.5-4.5	1:0.8-1:1.3	7.0	33.4	4000	X	√	X	65x42.8x60	45/55
JK-8670G-01CB ×356/UTL/CS	#11	6	4	1.5-4.5	1:0.8-1:1.3	7.0	33.4	4000	X	√	√	65x42.8x60	45/55
JK-8670G-01CB ×364/UTL/CS	#11	5	3	1.5-4.5	1:0.8-1:1.3	7.0	33.4	4000	X	√	√	65x42.8x60	45/55
JK-8670G-03FB ×356/UT	#11	5	3	1.5-4.5	1:0.8-1:1.3	7.0	33.4	4000	√	X	X	65x42.8x60	48/58
JK-8670G-03GB ×356/UT	#11	5	3	1.5-4.5	1:0.8-1:1.3	7.0	33.4	4000	√	X	X	65x42.8x60	48/58
JK-8670G-01CB ×356/UT2	#11	5	3	1.5-4.5	1:0.8-1:1.3	7.0	33.4	4000	√	X	X	65x42.8x60	48/58

DI means driven, UT stands for stepping thread trimming and lifting foot; UT2 stands for stepping thread trimming and lifting foot, without a standard thread trimmer; UTL stands for pneumatic thread trimming and lifting foot; CS stands for compact seaming