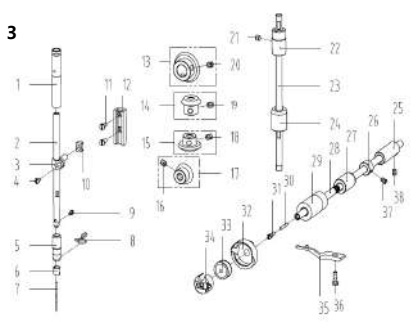


1. 机壳、外装分组件/Machine Frame & Miscellaneous Cover Components

序号 Part NO	零件描述 Description	数量 Number	公司零件号 Part NO	零件描述 Description	数量 Number	
1	101511001	Screw SM3/16"x28 L=9	36	115013040	Thread tension asm.	
2	11202003	Rubber plug	2	37	11326010	Rubber plug
3	11501003	Face plate	1	10126002	Tension release pin (H)	
4	13813005	Thread guide left	1	10122014	Rubber ring	
5	101511007	Screw SM1/16"x40 L=5.1	39	10151005	Screw SM9/64"x40 L=5.1	
6	11022009	Face plate gasket	1	10103001	Screw TM5/64"x40 L=5.1	
7	11020000	LED asm	1	11382006	Thread take-up spring	
8	101511001	Screw SM3/16"x28 L=9	41	113827009	Thread take-up spring (H)	
9	4032014	Rubber plug	1	14112015	Thread tension disk	
10	10122004	Rubber plug	1	14112023	Disk stopper	
11	10122005	Rubber plug	1	141152010	Thread tension post	
12	101511004	Screw SM3/16"x28 L=7	1	11427004	Thread tension spring	
13	13812018	Thread take-up lever cover	1	11427005	Thread tension spring (H)	
14	101511004	Screw SM3/16"x28 L=7	1	10122007	Thread disk rotating stopper	
15	11320104	3-hole thread guide	1	115011017	Thread tension nut	
16	10122005	Rubber plug	1	115013040	Thread tension asm.	
17	11419001	Knife	2	115013050	Thread tension asm (H)	
18	114811015	Screw SM9/64"x40 L=6	1	10122110	Rubber plug (one-hole)	
19	2072002	Rubber gasket	1	101511007	Screw SM1/16"x40 L=1.6	
20	1382008	Side plate gasket	1	10113004	Thread guide right	
21	13812025	Slide plate	1	10151010	Screw SM15/64"x28 L=10.5	
22	101511001	Screw SM3/16"x28 L=9	53	40156001	Nut SM9/64"x40	
23	11023304100	Electronic control box	1	11413011	Thread guide	
24	11502010004	Screw M5 L=20	1	10151002	Screw SM1/16"x40 L=5.5	
25	11463001	Machine feed stud	4	56	13812019	Ruler stop screw
26	10112005	Rubber plug	1	10151005	Screw SM1/16"x40 L=6.5	
27	10122006	Rubber plug	1	11501506	Needle plate	
28	10122007	Rubber plug	1	11315001	Needle plate (H)	
29	10151002	Machine feed stud	4	59	1015002	Slide plate
30	13806006	Screw SM9/16"x28 L=7	1	60	10127009	Slide plate spring
31	13812066	Thread tension guide pin	1	61	10151019	Screw SM3/32"x56 L=2
32	13810008	Thread tension post	1	62	13805001	Screw M3 L=12
33	11380004	Thread tension disk	2	63	1382001	Rubber plug
34	11227001	Thread tension spring	1	64	1102300700	Control panel
35	115011026	Thread tension nut	1			

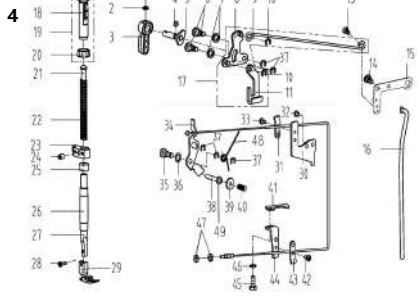
2. 上轴抽线分组件/Main Shaft & Thread Take-up Components

序号 Part NO	零件描述 Description	数量 Number	公司零件号 Part NO	零件描述 Description	数量 Number	
1	115020015	Thread take-up connecting rod	20	10108001	Main shaft thrust collar	
2	10126001	Thread take-up connecting rod pin	1	21	H03002	Snap ring 20
3	10151001	Screw SM15/64"x28 L=15	2	11010005	Feed eccentric cam	
4	10150002	Thread take-up connecting rod (H)	1	420006	Feed eccentric cam (H)	
5	11305010	Thread take-up connecting rod	1	23	1012017	Cover plate
6	H05013	Snap ring 6	1	24	101511013	Screw SM1/4"x40 L=13
7	11128010	washer	1	25	10151005	Screw SM9/64"x40 L=6
8	10112003	Needle bar crank protecting plate	1	26	12800014	The rear axle sleeve
9	115030020	Thread take-up lever asm	1	27	10122008	Oil seal
10	113800020	Thread take-up lever asm (H)	1	28	10102026	Main shaft
11	10151002	Screw SM9/64"x40 (left hand) L=4.8	1	29	10151002	Hand wheel
12	10151004	Screw SM9/32"x28 L=16	1	30	11023038	Motor
13	101511003	Screw SM9/32"x28 L=16	1	31	W01009	Spring washer 5
14	11380014	Needle bar crank	1	32	114513001	Screw M5 L=20
15	115015002	Screw SM1/4"x40 L=6	2	33	114513001	Screw M5 L=22
16	1150301500	Main shaft bushing front	1	34	10120100	Spring washer 5
17	10151006	Main shaft bushing mid	1	35	10120012	Spring washer 5
18	10150003	Main shaft bushing rear	1	36	11501009	Oil pump
19	101514001	Screw SM 1/4"x40 L=6	2	37	115021000	Oil return tube component
20	115011003	Oil pump impeller	1	38	115011003	Oil pump impeller



3. 针杆、竖轴、下轴组件/Needle Bar & Upright Shaft & Hook Driving Shaft Component

序号 Part NO	零件描述 Description	数量 Number	公司零件号 Part NO	零件描述 Description	数量 Number	
1	10103001	Needle bar bushing upper	1	18	10151007	Screw SM1/4"x40 L=7
2	11400319	Needle bar	1	20	10151007	Screw SM1/4"x40 L=7
3	10138002	Needle bar connecting rod	1	21	11351036	Screw SM15/64"x4.7
4	10151005	Screw SM9/64"x40 L=6	1	22	11380002	Upright shaft
5	10103002	Needle bar bushing lower	1	24	10403013	Upright shaft bushing lower
6	10138002	Needle bar bushing (H)	1	25	113803014	Hook driving shaft bushing back
7	10138002	Needle bar thread guide	1	26	10108002	Hook driving shaft snap ring
8	11403019	Needle bar bushing (H)	1	27	110203002	Lower shaft middle bushing
9	10117001	Needle DB-1+14	1	28	13802303	Hook driving shaft
10	10117002	Needle DP-5+21 (H)	1	29	13803120	Hook driving shaft bushing front
11	10113001	Lower bushing thread guide (L)	1	30	13820001	Oil wick
12	10111006	Screw SM1/8"x4 L=4.5	1	31	10151005	set screw
13	10109001	Slide block	1	32	11418007	Hook asm (H)
14	101511008	Screw SM1/16"x40 L=8	2	33	11418007	Hook asm (H)
15	10109002	Needle bar guide	1	33	10118003	Bobbin
16	10425004	Upper shaft bevel gear	1	34	11218504	Bobbin case asm
17	10425003	Upper small bevel gear asm	1	35	10112016	Finger postioner
18	10425002	Upper large bevel gear asm	1	36	1012002	Finger postioner (H)
19	10151007	Screw SM1/4"x40 L=7	2	36	11651005	Screw SM1/16"x40 L=7
20	10425001	Hook drive shaft bevel gear	1	37	10151012	Screw SM1/16"x40 L=4.8
21	10151007	Screw SM1/4"x40 L=7	2	38	113514020	Screw SM1/16"x40 L=7

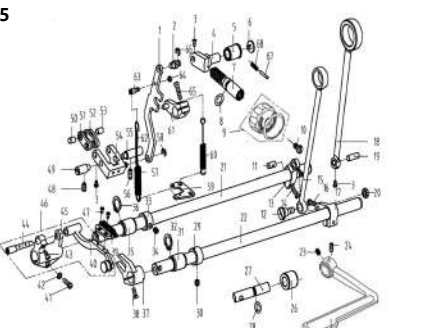


4. 压杆、自动抽线分组件/Presser Bar & Auto Lifter Components

序号 Part NO	零件描述 Description	数量 Number	公司零件号 Part NO	零件描述 Description	数量 Number	
1	10151010	Screw SM9/64"x40 L=11	1	25	10122112	Pressure bar oil cover
2	10126002	Washer	1	26	13800007	Presser bar bushing
3	13811029	Hand lifter	1	27	11380200	Presser bar
4	O1004	Rubber ring	1	28	101511009	Screw SM9/64"x40 L=10.5
5	101100200	Hand lifter cam asm	1	29	110016010	Presser foot asm
6	10152001	Wire	2	30	11380030	Presser foot asm (H)
7	10126015	Washer	2	30	11212009	Wire release bracket upper
8	101120010	Lift front lever component	1	31	11212008	Wire release press plate
9	10112013	Knee lifter pull rod	1	32	101511004	Screw SM15/64"x28 L=7
10	H05001	Spring	1	33	115011004	Spring
11	10112010	Lifting plate	1	34	114120600	Wire release plate pin
13	101520004	Hinge Screw SM3/16"x32	1	35	101520002	Wire release plate pin
14	101520003	Hinge Screw SM15/64"x28	1	36	10128015	Washer
15	10112014	Knee lifter back lever	1	37	11380200	Spring
16	10112015	Knee lifter connecting rod	1	38	10126003	Thread release supporting pin
17	10120020	Knee lifter lever asm	1	39	10128001	washer
18	11381018	Press regulating screw	1	40	10210003	Spring
19	113803003	Press regulating screw nut	1	41	10112022	Tube press plate
20	113810180	Presser regulating screw nut	1	42	113511004	Screw M4 L=8
21	13811028	Press regulating nut	1	43	11212008	Wire presser
22	1138031608	Press regulating nut (H)	1	44	11312001	Wire release bracket lower
23	10102003	Press regulating guide pin	1	45	116530003	Screw SM15/64"x28 L=14.5
24	11382010	Press regulating spring	1	46	W00024	Spring washer
25	11212002	Press regulating spring (H)	1	47	113512001	Nut M5
26	13806006	Thread take-up guide bracket	1	48	11427009	Release spring
27	10151007	Screw SM1/4"x40 L=8	1	49	H05012	Snap ring

6. 油杯、油圈检测组件/Oil Lubrication & Oil Measuring Components

序号 Part NO	零件描述 Description	数量 Number	公司零件号 Part NO	零件描述 Description	数量 Number	
1	101520015	Thread take-up connecting rod	20	10108001	Main shaft thrust collar	
2	10126001	Thread take-up connecting rod pin	1	21	H03002	Snap ring 20
3	10151001	Screw SM15/64"x28 L=15	2	11010005	Feed eccentric cam	
4	10150002	Thread take-up connecting rod (H)	1	420006	Feed eccentric cam (H)	
5	11305010	Thread take-up connecting rod	1	23	1012017	Cover plate
6	H05013	Snap ring 6	1	24	101511013	Screw SM1/4"x40 L=13
7	11128010	washer	1	25	10151005	Screw SM9/64"x40 L=6
8	10112003	Needle bar crank protecting plate	1	26	12800014	The rear axle sleeve
9	115030020	Thread take-up lever asm	1	27	10122008	Oil seal
10	113800020	Thread take-up lever asm (H)	1	28	10102026	Main shaft
11	10151002	Screw SM9/64"x40 (left hand) L=4.8	1	29	10151002	Hand wheel
12	10151004	Screw SM9/32"x28 L=16	1	30	11023038	Motor
13	101511003	Screw SM9/32"x28 L=16	1	31	W01009	Spring washer 5
14	11380014	Needle bar crank	1	32	114513001	Screw M5 L=20
15	115015002	Screw SM1/4"x40 L=6	2	33	114513001	Screw M5 L=22
16	1150301500	Main shaft bushing front	1	34	10120100	Spring washer 5
17	10151006	Main shaft bushing mid	1	35	10120012	Spring washer 5
18	10150003	Main shaft bushing rear	1	36	11501009	Oil pump
19	101514001	Screw SM 1/4"x40 L=6	2	37	115021000	Oil return tube component
20	115011003	Oil pump impeller	1	38	115011003	Oil pump impeller



5. 送料分组件/Feed Mechanism Components

序号 Part NO	零件描述 Description	数量 Number	公司零件号 Part NO	零件描述 Description	数量 Number	
1	10105007	Reverse feed connecting rod	1	34	10151002	Screw SM1/4"x40 L=6
2	11426021	Connecting rod pin	1	35	10620015	Bushing
3	11326011	Connecting rod pin (-7)	1	36	H03001	Snap ring 15
4	10151005	Screw SM9/64"x40 L=6	6	37	10104007	Driving shaft crank
5	10403017	Feed regulator bushing	1	38	116511005	Screw SM1/16"x40 L=13
6	10151023	Screw SM3/16"x28 L=6.5	1	39	11414002	Feed dog
7	10126045	Feed regulator stud	1	40	470060	Feed bar asm.
8	10122016	Rubber ring	1	41	10151016	Screw SM3/16"x28 L=14
9	101110100	Knob component	1	42	10128003	Washer
10	101110100	Knob component (-7)	1	43	10151025	Screw SM1/16"x40 L=7
11	10151022	Screw SM3/16"x28 L=18	1	44	10401007	Feed bar pin
12	10126011	Feed roller crank pin	1	45	480001	Feed bar bed
13	10152005	hinge Screw SM9/32"x28	1	46	1150070020	Feed bar asm
14	10104002	Feed roller shaft crank	1	47	10151018	Hook driving shaft L=6
15	11380101	Feed roller shaft crank (-7)	1	48	113514010	Screw SM15/64"x28 L=10.5
16	10151016	Screw SM3/16"x28 L=14	1	49	10126020	Connecting pin
17	115450003	Connecting rod	1	50	10126007	Connecting pin
18	10151016	Screw SM3/16"x28 L=14	1	51	10109005	Feed short shaking plate
19	10104004	Feed driving shaft crank	1	52	10109004	Feed long shaking plate
20	114450002	Rocker shaft connecting rod	1	53	10126007	Connecting pin
21	400083	Rocker shaft connecting rod (L)	1	54	101010020	Feed shaking plate bed
22	10126006	Connecting rod pin (-7)	1	55	10126100	Component right pin
23	101516003	Screw SM9/32"x28	1	56	10151010	Screw SM15/64"x28 L=10.5
24	10102008	Feed roller shaft	1	57	11427011	Spring
25	11202021	Feed driving shaft	1	58	11329020	Spring
26	10151006	Screw SM15/64"x28 L=7	1	59	1381281	Pull spring bring plate
27	10151003	Screw SM15/64"x28 L=10	1	60	10120111	Reverse feed pull spring
28	10131086	Reverse feed lever	1	61	1140402700	Feed reverse crank asm
29	10130024	Reverse feed shaft bushing	1	62	113804000	Feed reverse crank asm (-7)
30	10122017	Rubber ring	1	63	114530007	Screw SM1/16"x40 L=7.5
31	10108003	Feed roller shaft snap ring	1	64	114516004</	

